

Quran Statistics

RDS-Q No. #3 | **Chapter Data (114 Chapters)**

Reproducible Data
Science - **Quran**
quran.telematika.org

Document Origin
Eueung Mulyana
eueung@stei.itb.ac.id

Date
22.05.2020

■ Contents

● Overview	3
● All Chapters	5
● Chapter Split	10
● Odd/Even Split	13
● Resources	17
● Sample Data	19

Overview

The Holy Book Quran consists of **114** Chapters (Surah) and totally **6236** Verses (Ayah). The Quran was orally revealed over a period of 23 years and written for the first time at the time of Khulafaur Rasyidin. In the most printed editions, the Quran consists of 604 pages, which furtherly organized into parts, notably a so-called Juz. There is 30 Juz in total.

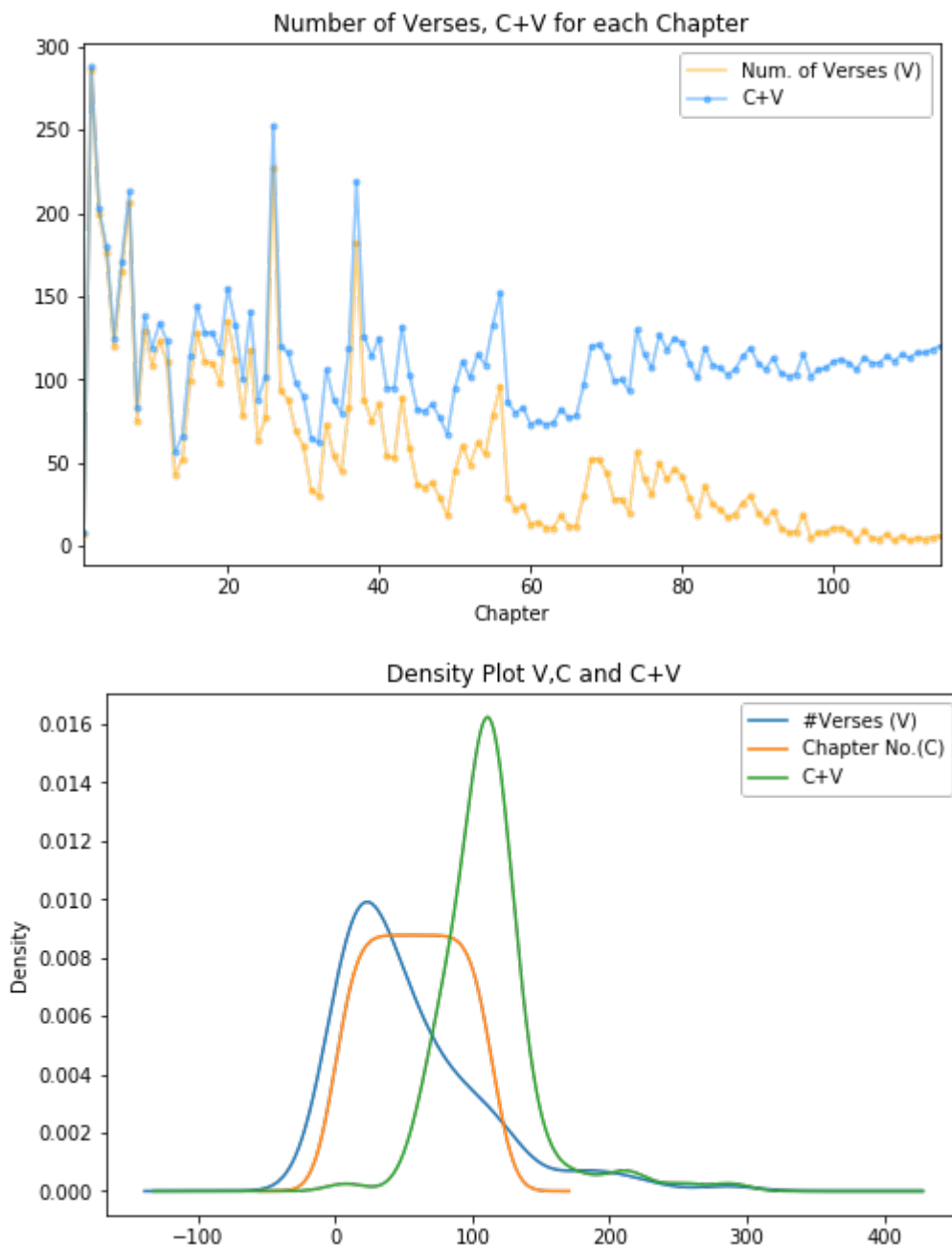
For the results presented in this document, the Quran text is based on the Uthmani version published by Tanzil project (<http://tanzil.net/>). Based on this text, the Quran is composed of **77430** words and **325666** letters. For comparison, based on data published by corpus.quran.com (Kais Dukes, University of Leeds) the figures are **77429** words and **623638** (join letters and diacritics/harakah).

This document mainly presents some numbers and figures with minimal narration since it is meant to be a quick reference for supporting further research in some aspects of The Noble Quran. Data used in RDS-Q #3 is at **chapter level** (length of **114**) i.e. data related to verses, words, and letters are pre-processed for the whole chapter.

All Chapters

Chapters & Verses

The following two Figures show number of verses (V), chapter number (C) and the addition of C+V. The first Figure depicts linear plot of V and C+V over C. The corresponding density functions are plotted in the second Figure.

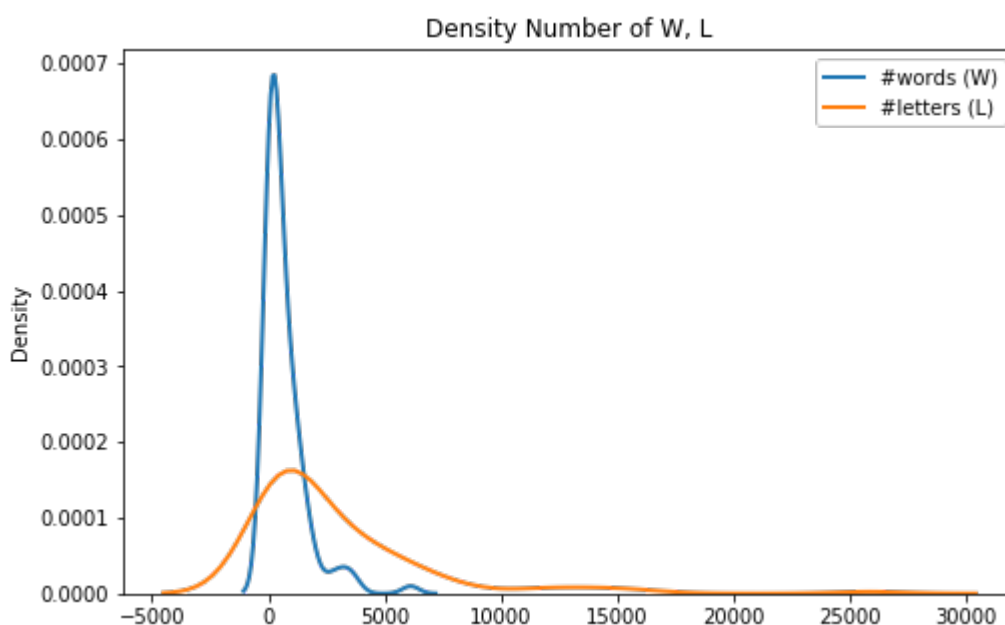
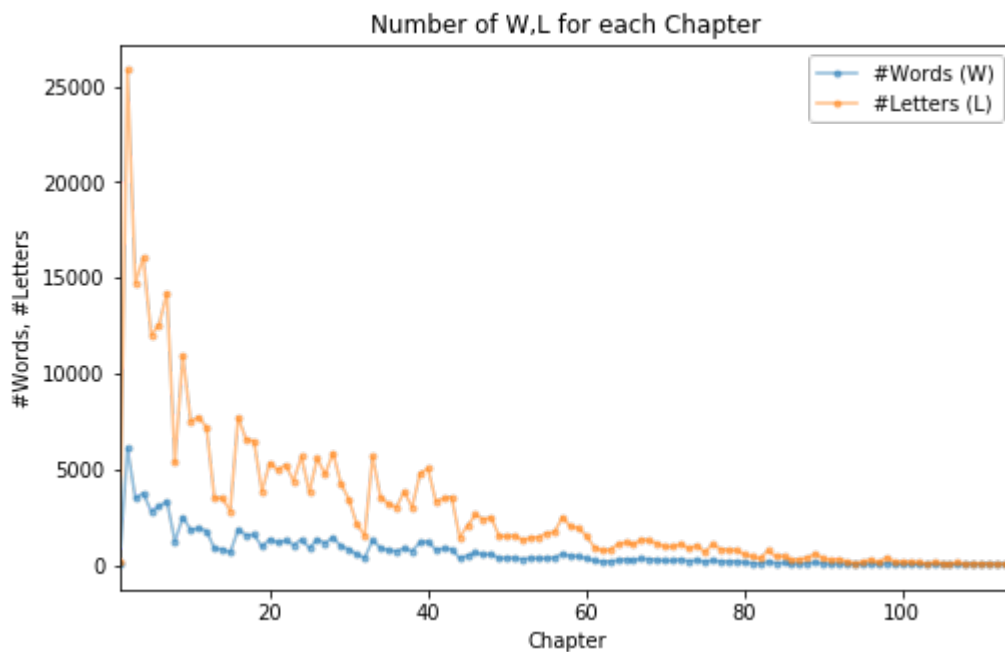


The following Table gives some statistical values for these parameters.

	MAX	75%	50%	25%	MIN	MEAN	STD	COUNT	SUM
Chapter No. (C)	114	85.75	57.5	29.25	1	57.5	33.05	114	6555
#Verses (V)	286	77.75	39.0	15.5	3	54.7	53.21	114	6236
C+V	288	120.0	110.0	95.5	8	112.2	35.74	114	12791

Words & Letters

The following two Figures show number of words (W) and number of letters (L). The first Figure depicts linear plot of W and L over C. The corresponding density functions are plotted in the second Figure.



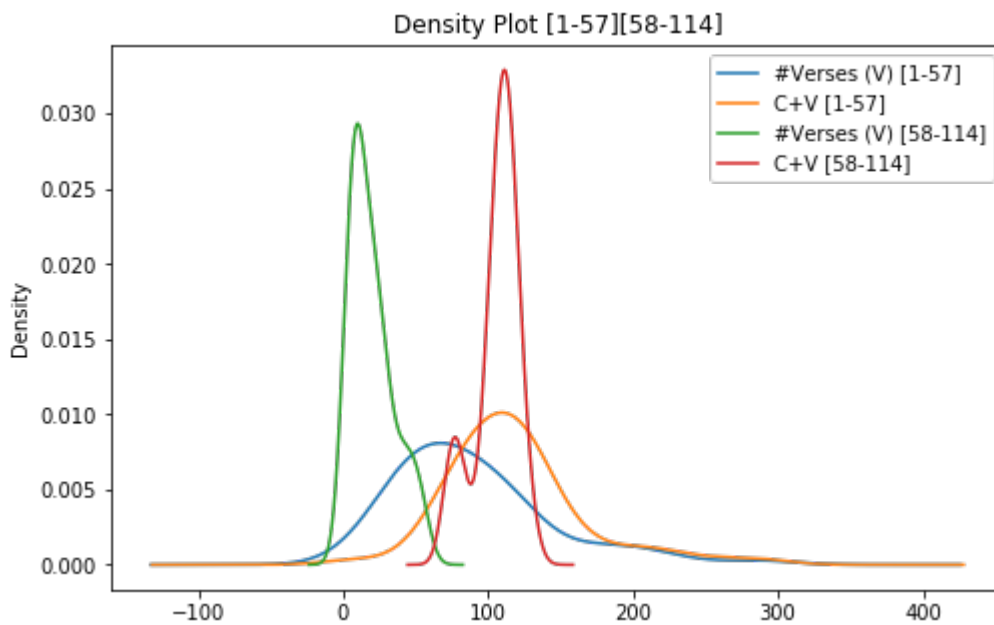
The following Table gives some statistical values for W and L.

	MAX	75%	50%	25%	MIN	MEAN	STD	COUNT	SUM
Num. of Words	6116	877.5	344.0	92.5	10	679.21	931.18	114	77430
Num. of Letters	25865	3750.0	1436.0	384.25	42	2856.72	3933.94	114	325666

Chapter Split

■ [1-57] & [58-114]

For some investigations we might want to look at a segment of the data. The following Figure shows density functions of C,V and C+V for the segment [1-57] and [58-114].



The following Table gives some statistical values for C,V and C+V for segmen [1-57].

	MAX	75%	50%	25%	MIN	MEAN	STD	COUNT	SUM
Chapter No. (C)	57	43.0	29.0	15.0	1	29.0	16.6	57	1653
#Verses (V)	286	111.0	78.0	53.0	7	89.54	55.03	57	5104
C+V	288	133.0	114.0	88.0	8	118.54	47.8	57	6757

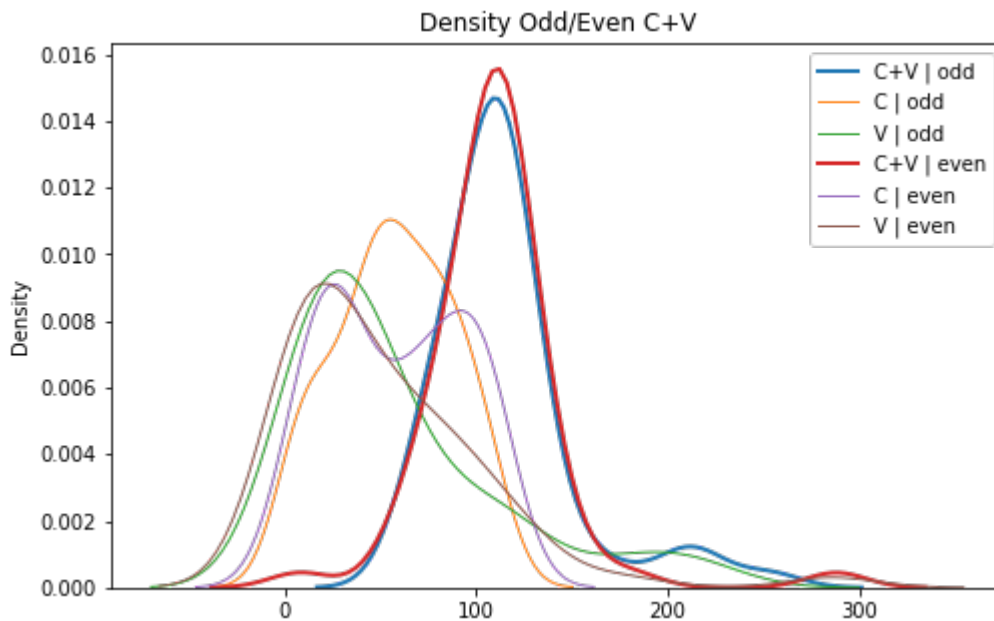
The following Table gives some statistical values for C,V and C+V for segmen [58-114].

	MAX	75%	50%	25%	MIN	MEAN	STD	COUNT	SUM
Chapter No. (C)	114	100.0	86.0	72.0	58	86.0	16.6	57	4902
#Verses (V)	56	28.0	17.0	8.0	3	19.86	14.63	57	1132
C+V	130	115.0	110.0	102.0	73	105.86	14.53	57	6034

Odd/Even Split

Chapters & Verses

For symmetry investigations we might want to look at a segment of the data which is based on certain criteria, in this case: odd/even C+V criteria as reported in [RDS-Q #1](#) and [RDS-Q #2](#). The following Figure shows density functions of C,V and C+V for the odd and even segment.



The following Table gives some statistical values for C,V and C+V for **odd** segmen.

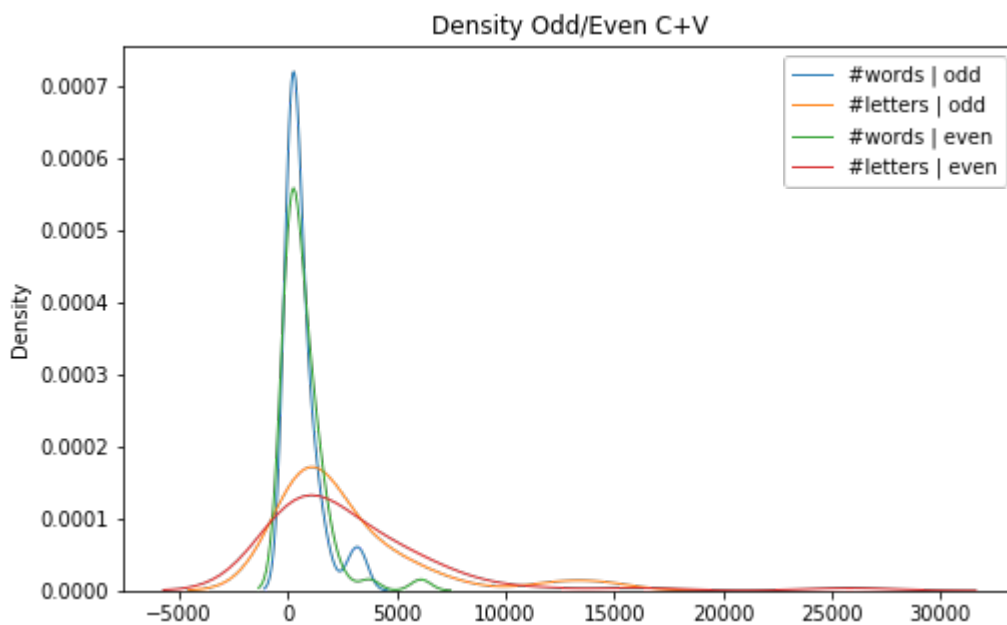
	MAX	75%	50%	25%	MIN	MEAN	STD	COUNT	SUM
Chapter No. (C)	110	82.0	55.0	37.0	3	57.05	30.39	57	3252
#Verses (V)	227	78.0	38.0	19.0	3	57.95	54.94	57	3303
C+V	253	121.0	111.0	95.0	65	115.0	36.4	57	6555

The following Table gives some statistical values for C,V and C+V for **even** segmen.

	MAX	75%	50%	25%	MIN	MEAN	STD	COUNT	SUM
Chapter No. (C)	114	91.0	58.0	27.0	1	57.95	35.78	57	3303
#Verses (V)	286	77.0	40.0	11.0	3	51.46	51.71	57	2933
C+V	288	120.0	110.0	98.0	8	109.4	35.16	57	6236

Words & Letters

The following Figure shows density functions of W and L for the odd and even segment.



The following Table gives some statistical values for W and L for **odd** segmen.

	MAX	75%	50%	25%	MIN	MEAN	STD	COUNT	SUM
Num. of Words	3481	860.0	346.0	164.0	10	651.44	828.91	57	37132
Num. of Letters	14738	3469.0	1453.0	667.0	42	2735.21	3486.34	57	155907

The following Table gives some statistical values for W and L for **even** segmen.

	MAX	75%	50%	25%	MIN	MEAN	STD	COUNT	SUM
Num. of Words	6116	893.0	300.0	54.0	14	706.98	1030.06	57	40298
Num. of Letters	25865	3818.0	1263.0	250.0	47	2978.23	4363.89	57	169759

Resources

■ Resources

	URL
Data	https://github.com/eueung/rds-q/tree/master/data
PDF	https://github.com/eueung/rds-q/tree/master/PDF
Project (All)	https://github.com/eueung/rds-q/
Web	https://quran.telematika.org/00003/quran-statistics-114.html
Web (All)	https://quran.telematika.org/

Sample Data

CH_NO	T_VE	T_W_NB	T_C_NB	CAVOE	CAV
1	7	29	139	even	8
2	286	6116	25865	even	288
3	200	3481	14738	odd	203
4	176	3747	16063	even	180
5	120	2804	12015	odd	125
6	165	3050	12554	odd	171
7	206	3320	14213	odd	213
8	75	1233	5342	odd	83
9	129	2498	10940	even	138
10	109	1833	7506	odd	119
11	123	1917	7714	even	134
12	111	1777	7193	odd	123
13	43	853	3495	even	56
14	52	830	3494	even	66
15	99	655	2826	even	114
16	128	1844	7709	even	144
17	111	1556	6555	even	128
18	110	1579	6480	even	128
19	98	961	3861	odd	117
20	135	1335	5329	odd	155
21	112	1169	4969	odd	133
22	78	1274	5232	even	100
23	118	1050	4390	odd	141
24	64	1316	5655	even	88

